

## ProForce Sentry Gloves

### HPPE ANSI A3 Cut-Resistant Shell with Polyurethane Coating

Designed for protection of hands from cuts, scratches and abrasions when handling sharp and abrasive materials.

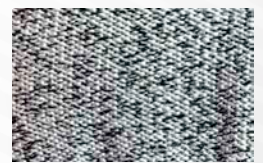
Work applications include demolition, construction, remediation, abatement, floor removal, metal stamping, and glass handling.

#### Features

- 13-gauge gray speckled high performance HPPE shell for protection and greater cut resistance up to the wrist
- Polyurethane palm coated for abrasion and cut resistance
- High dexterity and flexibility for comfort throughout the day
- ANSI A3 cut level protection
- Breathable polyurethane coated helps keeps hands cool and dry thought the day
- Good performance in oily, wet, or dry applications
- Color coded wrist for easy size identification



Palm Detail



Back-of-Hand Detail

#### ProForce Sentry Gloves

Item	Size
2651-0937	Small
2652-0938	Medium
2653-0939	Large

Item	Size
2654-0930	X-Large
2655-0931	2X-Large

